

TRIX ACADEMY

One School. One Team. Same Goals.
2022-2023



End-of-Year Progress Toward Goals



End of Year Academic Growth Goals

END OF YEAR GOAL

READING AND MATH

The MECC;Trix Academy Scholars will achieve a Median Growth Percentile of 50 on the NWEA MAP End-of Year Reading Assessment.

The MECC;Trix Academy Scholars will achieve a Median Growth Percentile of 50 on the NWEA MAP End-of Year Math Assessment.

Growth goals are based on NWEA MAP Growth as required in Public Act 48 of 2021.

Trix Schoolwide Fall-Spring Growth Summary

Goal: Median Growth Percentile of 50.

Fall to Spring ELA NWEA
Median Conditional Growth
Percentile

45

Fall to Spring Math NWEA
% of Students Meeting
Growth Goals

36

Trix Special Education Scholars Summary

Goal: Median Growth Percentile of 50.

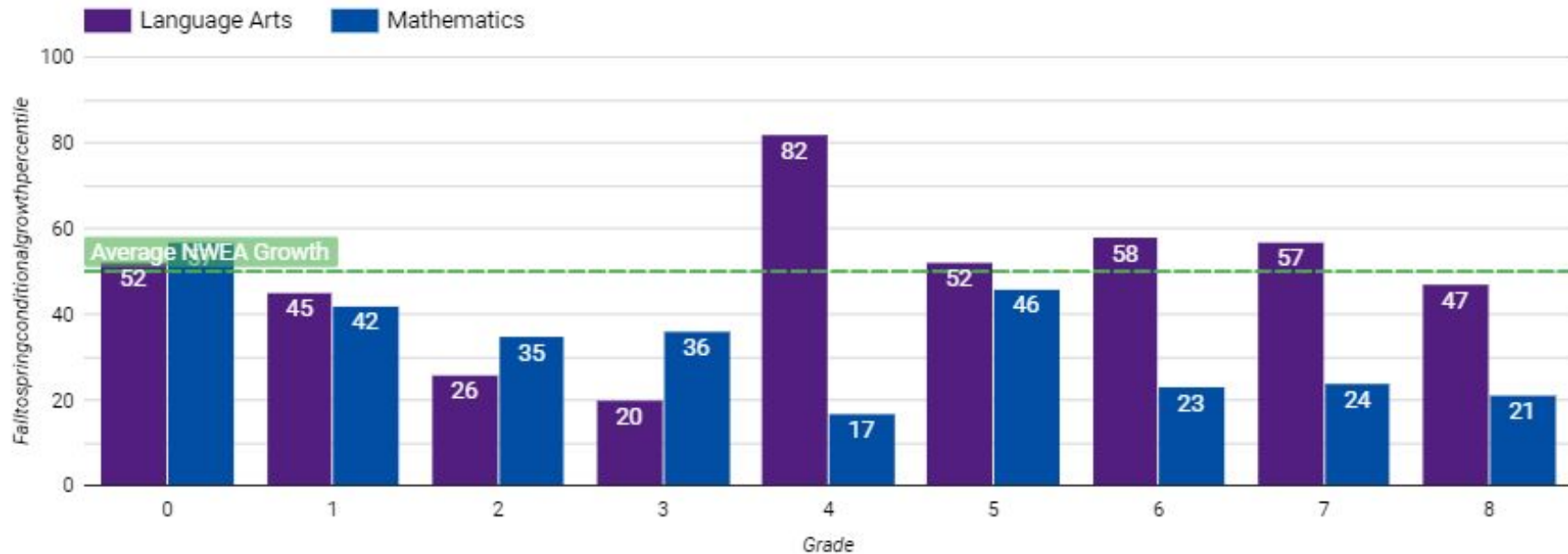
Fall to Spring ELA NWEA
Median Conditional Growth
Percentile

23

Fall to Spring MATH NWEA
Median Conditional Growth
Percentile

35

NWEA MAP - Fall to Spring Conditional Median Growth Percentile



Median Growth Percentile by Subject and Grade Level

Trix Schoolwide Fall-Spring Growth Summary

Percent of Students Meeting Growth Goal (# of students who met their projected growth compared to total number of students)

Fall to Spring ELA NWEA
% of Students Meeting
Growth Goals

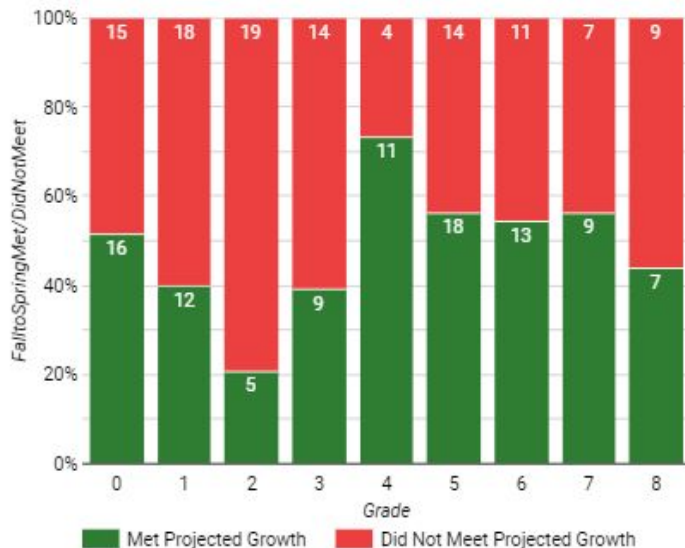
47%

Fall to Spring Math NWEA
% of Students Meeting
Growth Goals

38%

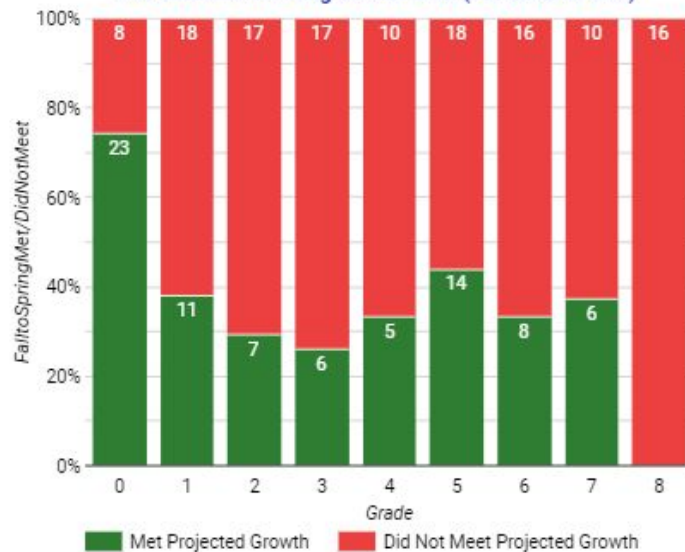
Language Arts - Fall to Spring

% of Students Meeting Growth Goal (PLA Goal is 60%)



Math - Fall to Spring

% of Students Meeting Growth Goal (PLA Goal is 60%)



Grade Level RIT Fall to Spring 2022-2023

Fall 22-23 % of
Students Above
Grade Level RIT

ELA 17%	Math 14%
------------	-------------

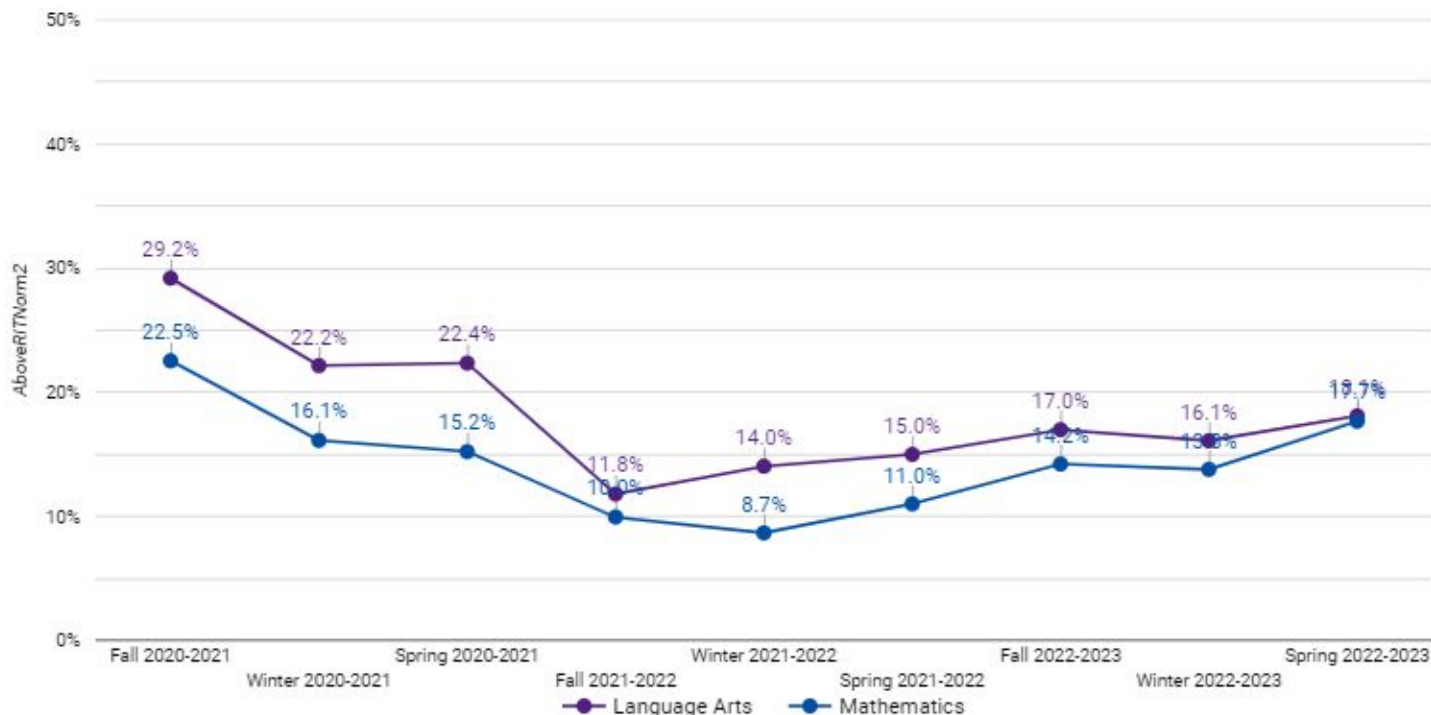
Winter 22-23 % of
Students Above
Grade Level RIT

ELA 16%	Math 14%
------------	-------------

Spring 22-23 % of
Students Above
Grade Level RIT

ELA 18%	Math 18%
------------	-------------

NWEA MAP - % of Students At or Above Grade Level RIT Norm



Year over Year Comparison

% OF PROJECTED GROWTH MADE

Fall 2021-Spring 2022

ELA: 86% MATH: 78%

Fall 2022-Spring 2023

ELA: 91% MATH: 81%

% OF SCHOLARS MAKING GROWTH TARGET

Fall 2021-Spring 2022

ELA: 32% MATH: 36%

Fall 2022-Spring 2023

ELA: 47% MATH: 38%

MEDIAN CONDITIONAL GROWTH PERCENTILE

Fall 2021-Spring 2022

ELA: 40% MATH: 34%

Fall 2022-Spring 2023

ELA: 45% MATH: 36%

Our Plan Continues: 3 Tiered Supports

Tier 1

ELA:

Into Reading (K-5), Into Literature (6-8), (6-8), RAZ Plus (K-5), Guided Reading (K-5) Book Club (6-8) Orton Gillingham Phonics (K-2)

MATH:

Eureka Math (K-8), ZEARN-online instructional platform aligned to Eureka, Small Group Math (K-8)

Tier 2

ELA:

All of Tier 1 + Reading Advantage: LLI (2-8), mclass Amplify Early and Foundational Literacy tools (K-8), priority scholar targeted instruction

MATH:

All of Tier 1 + Math Advantage: Zearn small group intervention instruction. Targeted priority scholar groupings and weekly data review..

Tier 3

ELA:

All of Tier 1 and 2 + Reading Advantage: Corrective Reading and Reading Mastery, Orton Gillingham Phonics (2-5)

MATH:

All of Tier 1 and 2 + ZEARN Individualized Bookmark lessons, small group pull-out instruction, push-in one on one support in the classroom

Additional Interventions and Strategies

- **Progress Monitoring scholars for Guided Reading and Reading Advantage (K-5).**
- **Reading Advantage during Intervention Block (6-8).**
- **Identification of priority scholars for proficiency with daily aggressive monitoring and coaching during Into Reading/Literature, Close Reading, and Eureka math lessons (K-8).**
- **Weekly monitoring of internal data tracking with weekly Close Reading and Eureka Topic assessment data and scholar work utilized in weekly ELA and Math PLC meetings (K-8).**
- **Implementation of Targeted Small Group instruction for Math and ELA (6-8).**
- **Training and execution of engagement and checking for understanding strategies.**
- **Increased Teacher Live-Coaching and support for curriculum implementation.**
- **Targeted Math Advantage interventions with ZEARN small group lessons.**
- **Implementation of afterschool tutoring for ELA and Math**